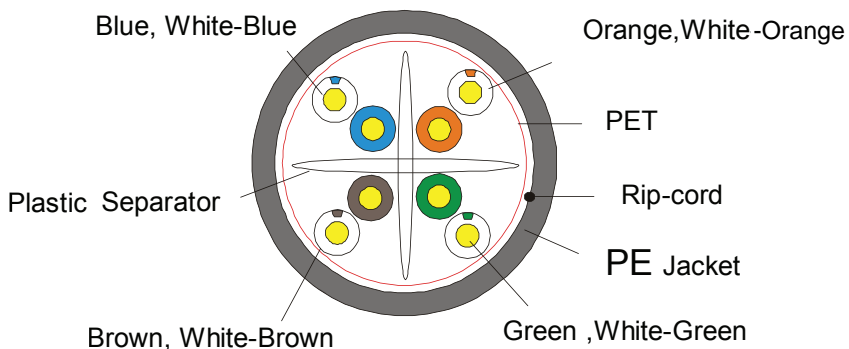


# LAN CABLE

## U/UTP 4Pairs cable-category 6-250MHz PE Sheath



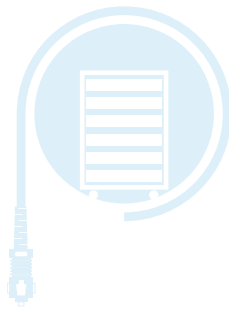
P14-1509/ P14-1509M

Product Description: Bare solid copper conductor Rohs/REACH complied PEJacket Installation temperature:-30°C ~ +50°C				Application: 100Base-TX 100Base-T 100VG-AnyLAN 1000Base-T(Gigabit Ethernet) 1000Base-TX ATM Noisy Environments			
Content of the Data Sheet							
Category	U/UTP CAT6-4P-PE				Sheath	Before Aging Tensile Strength (Mpa) ≥10	
Test Standard	ISO/IEC11801	TIA-568-C.2	YD/T1019			Elongation (%) ≥350	
Conductor	Material	SOLID-Bare Copper				Physical Properties	Aging Period (°C×hrs) 100°C×24h×10d
	Nom. O.D. (mm)	0.570	Up	+0.005	Down		-0.005
Insulation	Material	HDPE				Electrical Characteristics (20°C)	1.0-250.0MHz Impedance ((Ω) 100 ± 15
	Diameter	1.02±0.03mm					1.0-250.0MHz Delay Shew (ns/100m) ≤45
Sheath	Thickness	0.60±0.05 mm				NVP 69%	
	External O.D.	6.7±0.5 mm					
	Surface	Clean, Frap, Satiation					
	Material	PE					
	Color	Black					
Surface Printing	Letter height	3.0±0.3mm				Capacitance(nF/100m) max: 5.6	
	Color	White					
	Print error & Space	≤±0.5%, 1m					
Color	1.Blue, White-Blue		2.Orange, White-Orange		DC Resistance 20°C(Ω/100m) max 9.5		
	3.Green, White-Green		4.Brown, White-Brown				
Packing	Wooden Tray					DC Conductor Resistance Unbalance (%)m5.0	
Carton dimension	---						
Packing length	305±1.5m						
Rip-cord	Yes	Drain wire	No				



# LAN CABLE

Technical Performance (100m):								
Frequency (MHz)	RL $\geq$ dB	ATT(20°C) $\leq$ dB	NEXT $\geq$ dB	PHASE DELAY $\leq$ ns	Frequency (MHz)	PSNEXT $\geq$ dB	ELFEXT $\geq$ dB	PSELFEXT $\geq$ dB
1	20.0	2.03	74.3	570.00	1	72.3	67.8	64.8
4.0	23.0	3.78	65.3	552.00	4	63.3	55.8	52.8
8.0	24.5	5.32	60.8	546.73	8	58.8	49.7	46.7
10.0	25.0	5.95	59.3	545.38	10	57.3	47.8	44.8
16.0	25.0	7.55	56.2	543.00	16	54.2	43.7	40.7
20.0	25.0	8.47	54.8	542.05	20	52.8	41.8	38.8
25.0	24.3	9.51	53.3	541.20	25	41.3	39.8	36.8
31.25	23.6	10.67	51.9	540.44	31.25	49.9	37.9	34.9
62.5	21.5	15.38	47.7	538.55	62.5	45.4	31.9	28.9
100	20.1	19.80	44.3	537.60	100	42.3	27.8	24.8
200	18.0	28.98	39.8	536.54	200	37.8	21.8	18.8
250	17.3	32.85	38.3	536.27	250	36.3	19.8	16.8



# PROTEGER

**STRONG | SAFE | SECURE**

